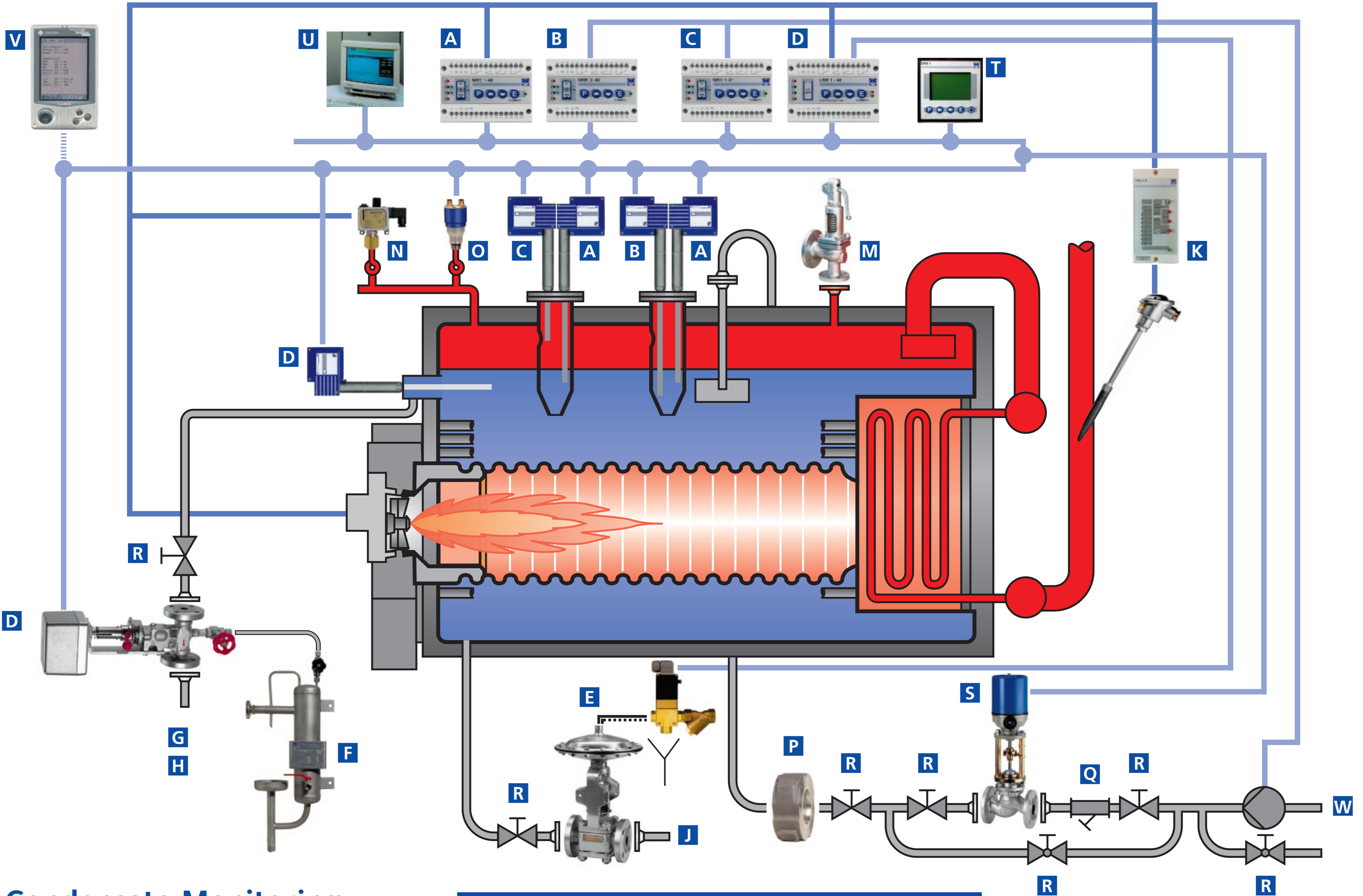
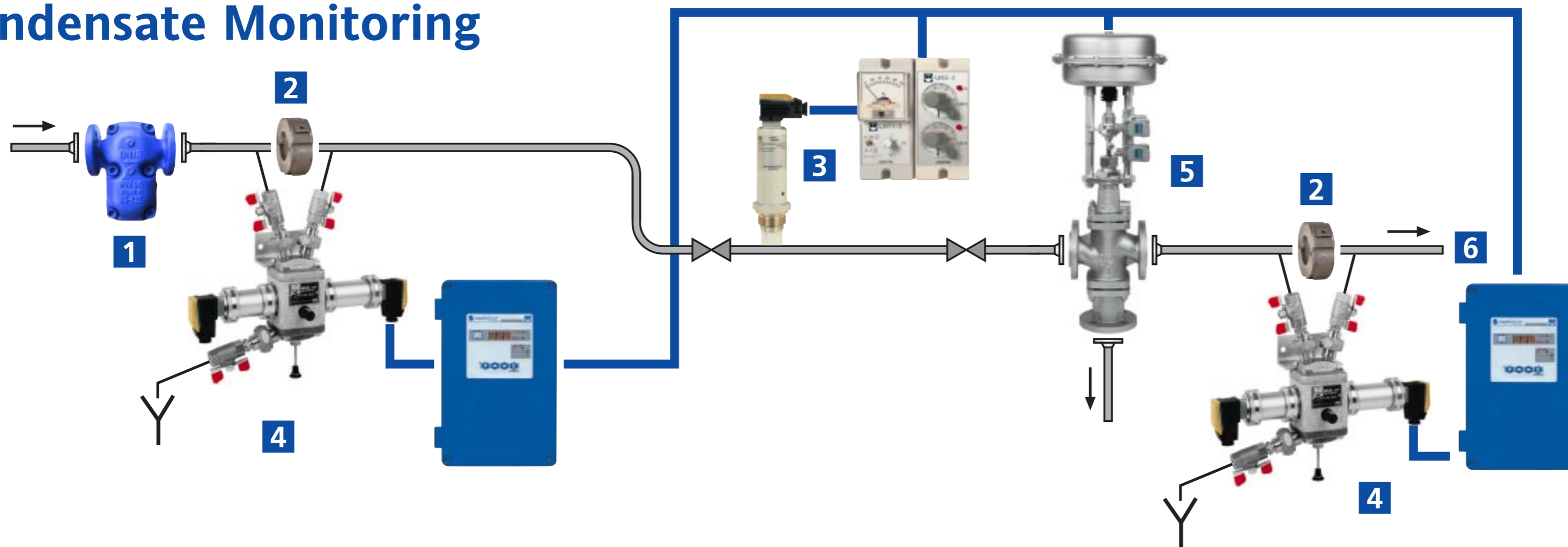


GESTRA Steam Boiler Equipment

For operation e.g. according to TRD 604 (72 h) or EN 12953 (24 h)



Condensate Monitoring



Type Approvals:
 EC approval
 TÜV (Germany)
 SVBD (Switzerland)
 TI (Slovakia)
 ITI TÜV (Czech Republic)
 TMB (Hungary)

**With Energy
 into the Future**

Example of a Steam-Boiler Plant Operating without Constant Supervision (72 h)

GESTRA Steam Boiler Equipment

- A** Low-level limiter of "high-integrity design": level electrode NRG 16-40, level switch NRS 1-40
- B** Modulating level controller with integrated 2nd water level and conductivity indicator: level probe NRG 26-40, level controller NRR 2-40, control terminal and display unit URB 1
- C** High-level alarm of "high-integrity design": level electrode NRG 16-41, level switch NRS 1-41
- D** Conductivity measurement and continuous/intermittent blowdown: conductivity electrode LRG 16-40, continuous blowdown controller LRR 1-40, continuous blowdown valve BAE 36, intermittent blowdown valve MPA, 3/2-way pilot valve, strainer
- F** Sample cooler

- G** Blowdown flash vessel
- H** Residual blowdown cooler
- J** Blowdown receiver
- K** Safety temperature limiter: resistance thermometer TRG 5-55, temperature switch TRS 5-6
- M** Safety valve GSV
- N** Pressure limiter DSH
- O** Pressure controller/transmitter
- P** Disco non-return valve RK 86
- Q** Strainer GSF
- R** Stop valve GAV

- S** Electrical/pneumatic control valve V 725
- T** Control terminal and display unit URB 1
- U** Process data acquisition
- V** Process data query / commissioning support via modem/handy/Palm
- W** Monitoring of the fresh water:
 - ▶ Softening equipment – using residual hardness measurement with Aquacon TRD
 - ▶ Demineralization equipment – using conductivity monitoring

Condensate Monitoring

- 1** Steam trap
- 2** Disco non-return valve RK 86
- 3** Monitoring for ingress of foreign substances, such as acids and blowdown: conductivity electrode LRG 12-1, conductivity transmitter LRT 1-6, Max.-min. limit switch URS 2
- 4** Monitoring for ingress of foreign substances, such as oil and grease: oil and turbidity detector OR
- 5** Electrical/pneumatic three-way valve for discharging the contaminated condensate
- 6** Condensate tank