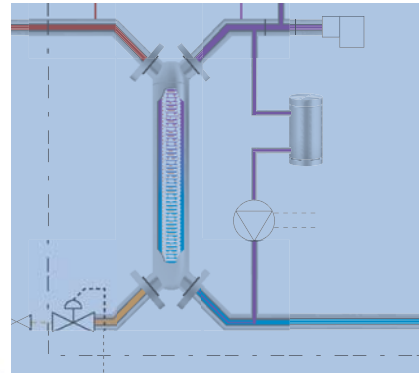




# MANUFACTURER OF INNOVATIVE CONCEPTS IN STEAM MANAGEMENT

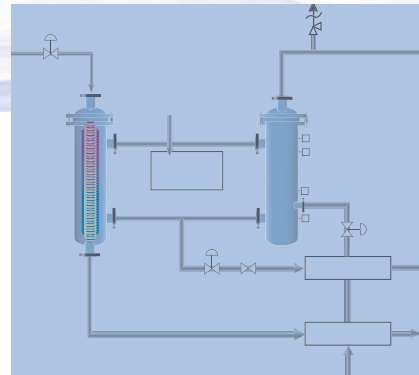
## Hot Water Generation (and other Fluids)

- Patented steam powered fluid heater is efficient, economical, and an ASHRAE award winning design.
- Lower installed cost than other fluid heaters
- Utilize steam that is wasted by other heaters (Save 20% of energy usage at 125 psig steam, save 5.4% of energy usage at 15 psig steam).
- Smaller footprint
- No dedicated condensate pump required
- No dedicated PRV station required



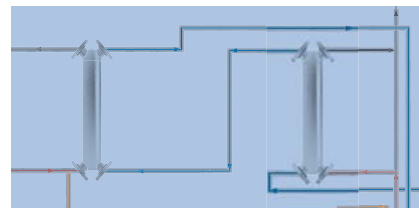
## Clean Steam Generation

- Patented reboiler design generates clean steam for humidification or sterile process. It's energy efficient and installation is economical.
- The Maxi-Therm makes clean steam if used with softened or demineralized water. (D.I., R.O.)
- Using central or district steam, Maxi-Therm will make steam at pressures above 0 psig.
- Maxi-Therm may consume 15.4% LESS steam than generators on central plant steam.



## Heat and Water Recovery

- Recover heat and purified water from flash steam vents. They look like smoke stacks.
- Clean them up AND conserve resources. There are three systems:

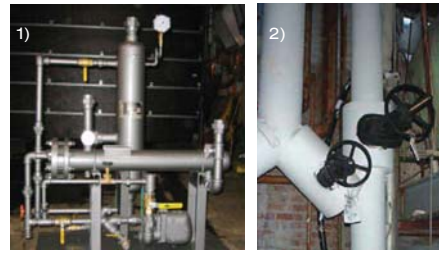




Hot Water Generation



Clean Steam Generation



Heat and Water Recovery  
1) Continuous Blowdown Recovery from Boiler Surface Blowdown  
2) Flash Vent or Stack Recovery to Water  
3) Flash Vent or Stack Recovery to Air



## Steam Specialties

### STEAM TRAPS

- Inverted Bucket Designs comparable to Armstrong
- Float and Thermostatic comparable to Spirax Sarco
- Disc, Thermostatic Bellows and unique Bimetal Designs
- Maxi-therm steam traps were tested at the independent laboratory of the University of ETS Montreal per ASME test code PTC39.1

### HEAT EXCHANGERS

- Maxi-Therm offers a complete collection of exchangers with a variety of construction.
- It is essential to understand the application and the system goals.

### STEAM MIXERS

- Maxi-Therm steam mixers eliminate medium and high pressure return lines

## Services

### TRAINING

We demonstrate the whole steam loop for you. Pressure reducing, steam heating coils, water heaters, and condensate return. Let us show you steam under glass, trap testing, and system design, with live steam demonstrations that tell "how and why".



### AUDITS

We start at the boiler room and walk every major steam line around to condensate return. We focus on critical components - especially reducing stations, heat exchangers, and every link between high and low pressure. We document problems, opportunities and recommendations.

### POCKET PC REPORT

Maxi-Therm's exclusive Pocket PC approach helps you "stay on top" of your trap population. We enter your trap data during the initial audit and present you with a Pocket PC loaded with everything to keep the records up to date.

