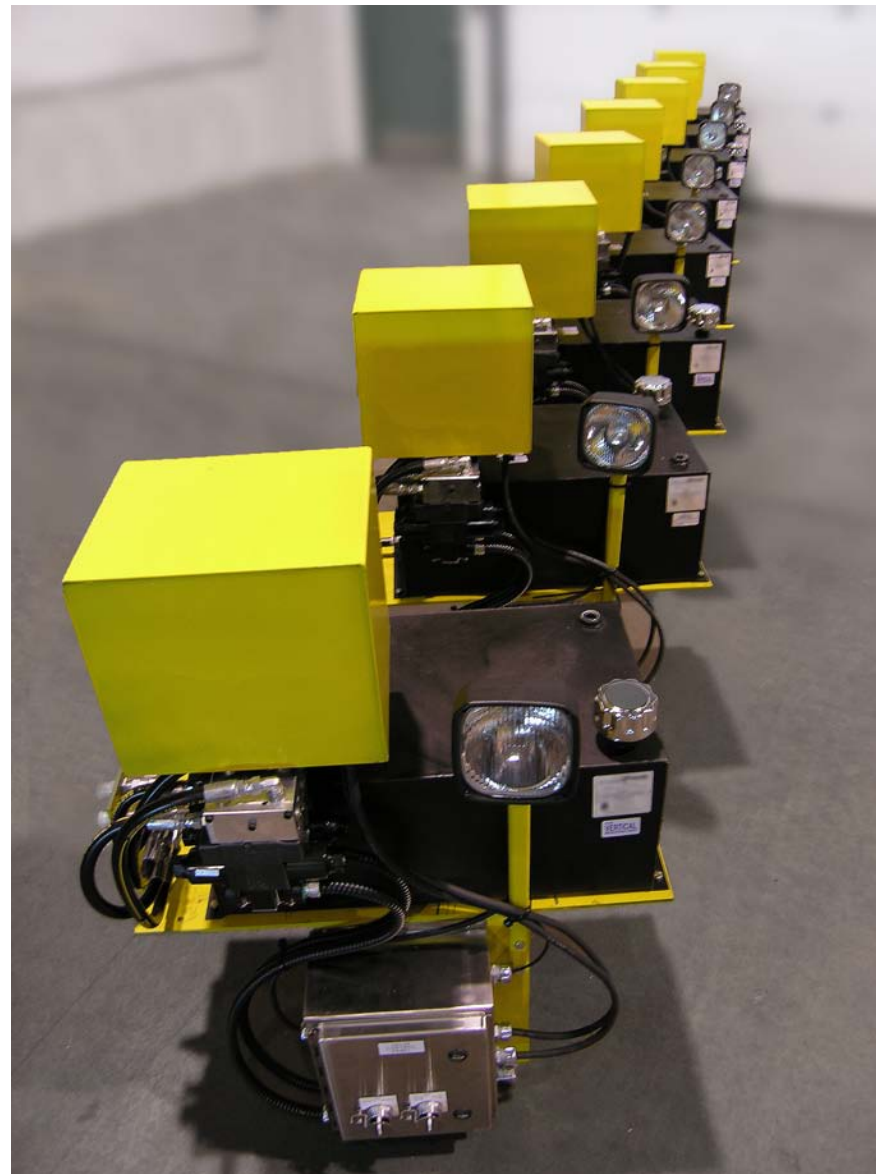




HYDRAULIC POWER UNITS (HPU)
CUSTOM ENGINEERED FULLY INTEGRATED

SUMMIT HYDRAULIC
PowerPAK

WITH OVER 20 YEARS OF INDUSTRIAL, MINING AND OIL SANDS EXPERIENCE, TRUST SUMMIT VALVE AND CONTROLS TO DELIVER RELIABLE SOLUTIONS TO MEET YOUR ENGINEERED HYDRAULIC POWER UNIT REQUIREMENTS.



When do you need a Summit hydraulic powerpak?

Whenever a reliable supply of high pressure hydraulic fluid is required to drive hydraulic cylinders in heavy duty thrust applications (ie valves, positioning systems, other services) usually in remote locations where pneumatic or electric actuation systems are not feasible.



SUMMIT HYDRAULIC POWERPAK AC

Available options:

- + A choice of working pressures
- + AC operation
- + Motor starters
- + Filters, gauges and quick couplings
- + Larger hydraulic reservoirs
- + Custom support structure
- + Electrical control panels (SS panel c/w switches + indicator lights)
- + PLC Control
- + Single or multiple valve operation
- + Indoor or outdoor system



SUMMIT HYDRAULIC POWERPAK (WITH ACCUMULATOR) AC

Available options:

- + A choice of working pressures
- + AC operation
- + Motor starters
- + Filters, gauges and quick couplings
- + Larger hydraulic reservoirs
- + Custom support structure
- + Electrical control panels (SS panel c/w switches + indicator lights)
- + PLC Control
- + Single or multiple valve operation
- + Indoor or outdoor system



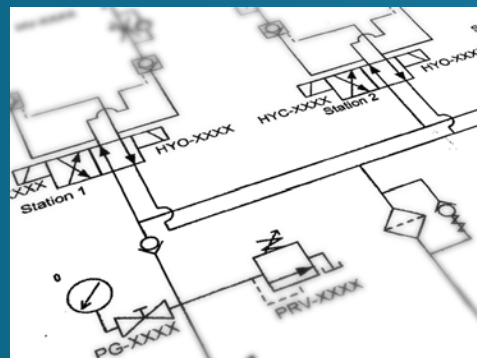
SUMMIT POWERPAK DC

Available options

- + A choice of working pressures
- + DC operation
- + Motor starters
- + Filters, gauges and quick couplings
- + Larger hydraulic reservoirs
- + Mounting bracket (to valve or support structure)
- + Electrical control panels (SS panel c/w switches and indicator lights)
- + Single or dual valve operation
- + Outdoor system
- + Remote and/or local controls
- + Safety lighting /labels /locking valves



Summit provides start-up services and HPU training on how to setup and maintain your system.



Summit provides Installation, Operating, and Maintenance (IOM) manuals for detailed and safe operation.



Field installation in an outdoor cold weather environment.

THE SUMMIT HYDRAULIC POWER UNIT DESIGN BEGINS WITH STANDARD GEAR PUMP(S), MOTOR(S), ACCUMULATOR(S) AND RESERVOIR CHOICES. BASED ON CUSTOMER SPECIFIC REQUIREMENTS, OPTIONS ARE INTEGRATED INTO THE DESIGN ACCORDINGLY.

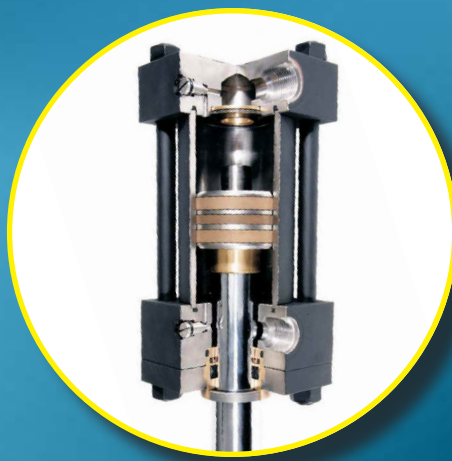
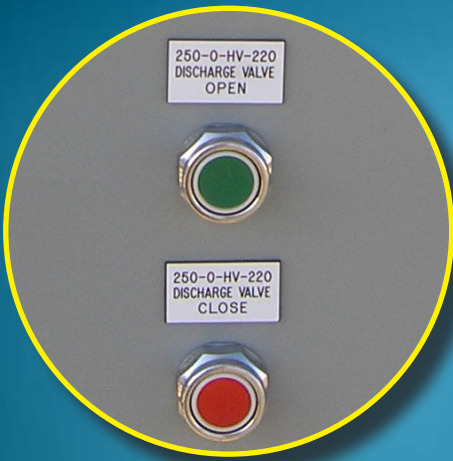
A partial list of available options includes:

- + AC, DC or AC/DC power supply
- + Electric control panels
- + Advanced fieldbus communication options
- + Fail safe options

- + Local and/or remote controls
- + Built in safety features and work lights
- + Single or multiple directional control valves
- + Indoor or outdoor rated systems
- + Stationary or portable units

THE VALUE SUMMIT PROVIDES IS MORE THAN THE PRODUCTS WE REPRESENT. WE OFFER TRAINING ON OUR PRODUCTS, AS WELL AS INDUSTRY SPECIFIC APPLICATION KNOWLEDGE. OUR GOAL IS TO BE YOUR TECHNICAL RESOURCE FOR ALL YOUR FLOW CONTROL NEEDS.

FINALLY, INTEGRITY IS THE MOST IMPORTANT OF OUR VALUES - IT IS AT THE CORE OF EVERY RELATIONSHIP.



LOCATIONS

Edmonton

5304-68 ave
Edmonton, AB
T6B 3M4

Ph: 780-468-6900

Calgary

339-50 ave. S.E.
Calgary, AB
T2G 2B3

Ph: 403-640-0982

Vancouver

8543 Commerce Court
Burnaby, BC
V5A 4N4

Ph: 604-422-6900

Saskatoon

835C - 60th Street East
Saskatoon, SK
S7K 5Z7

Ph: 306-373-4134

Winnipeg

154- 99 Scurfield Blvd.
Winnipeg, MB
R3Y 1Y1

Ph: 204-488-1689



Scan to visit us online!
info@summitvalve.com